



**Standard Mat**

**Tool No:** 235  
**Shape:** Rectangle

**Cut Size -**  
**Width:** 235mm  
**Height:** 200mm

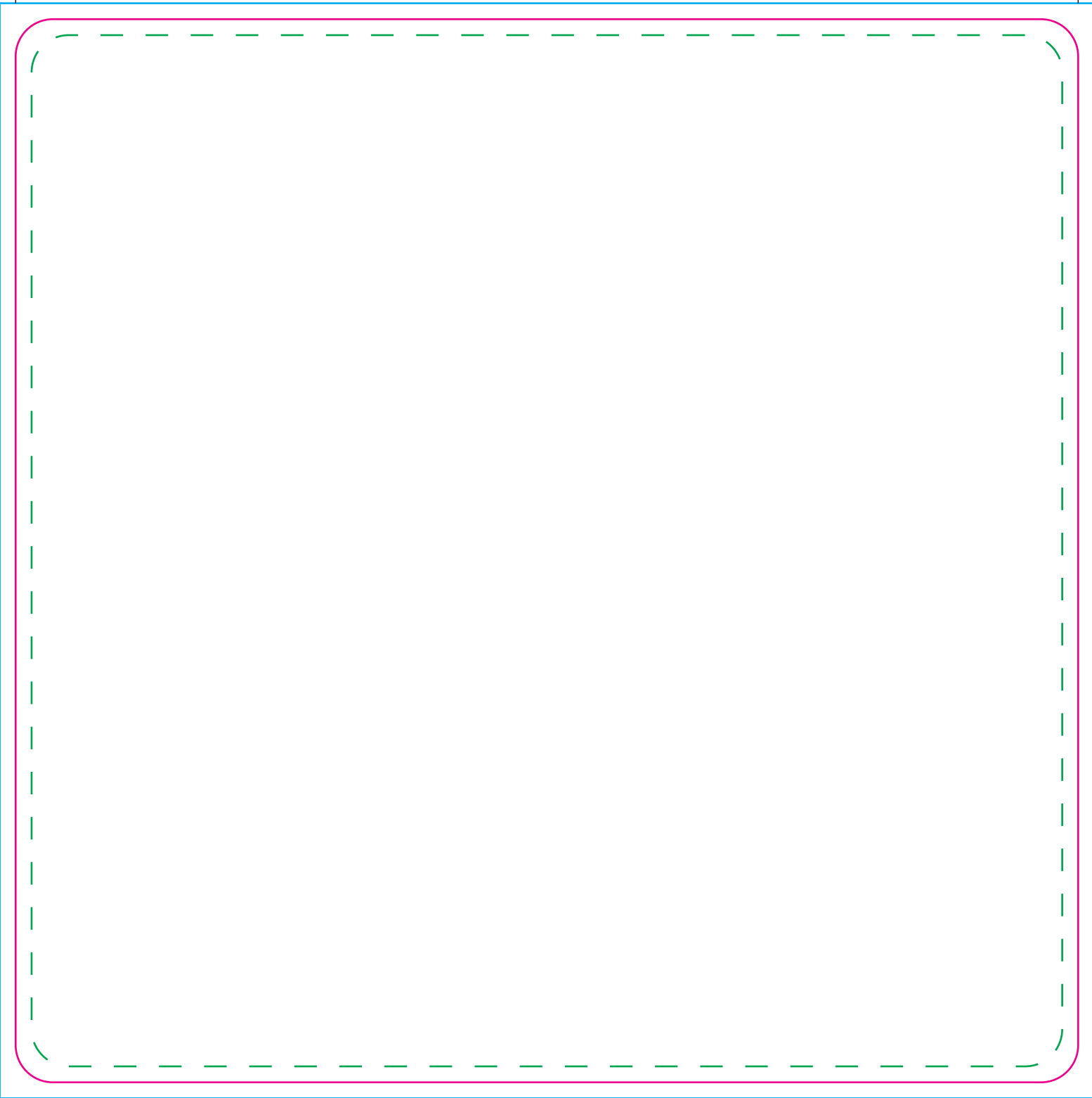
**Artwork with Bleed -**  
**Width:** 241mm  
**Height:** 206mm

--- Please keep all live matter such as text, logos and other important images within this area.

This dieline represents a current finishing tool. Any alterations to this dieline may incur additional charges.

**Parkes**  
display | print | expo

**01767 603930**  
sales@[parkesexpo.com](mailto:sales@parkesexpo.com)  
[www.parkesexpo.com](http://www.parkesexpo.com)



## Mat

**Tool No:** 867 & DC0006

**Shape:** Square

**Cut Size -**

**Width:** 200mm

**Height:** 200mm

**Artwork with Bleed -**

**Width:** 206mm

**Height:** 206mm

- - - Please keep all live matter such as text, logos and other important images within this area.

**This dieline represents a current finishing tool. Any alterations to this dieline may incur additional charges.**

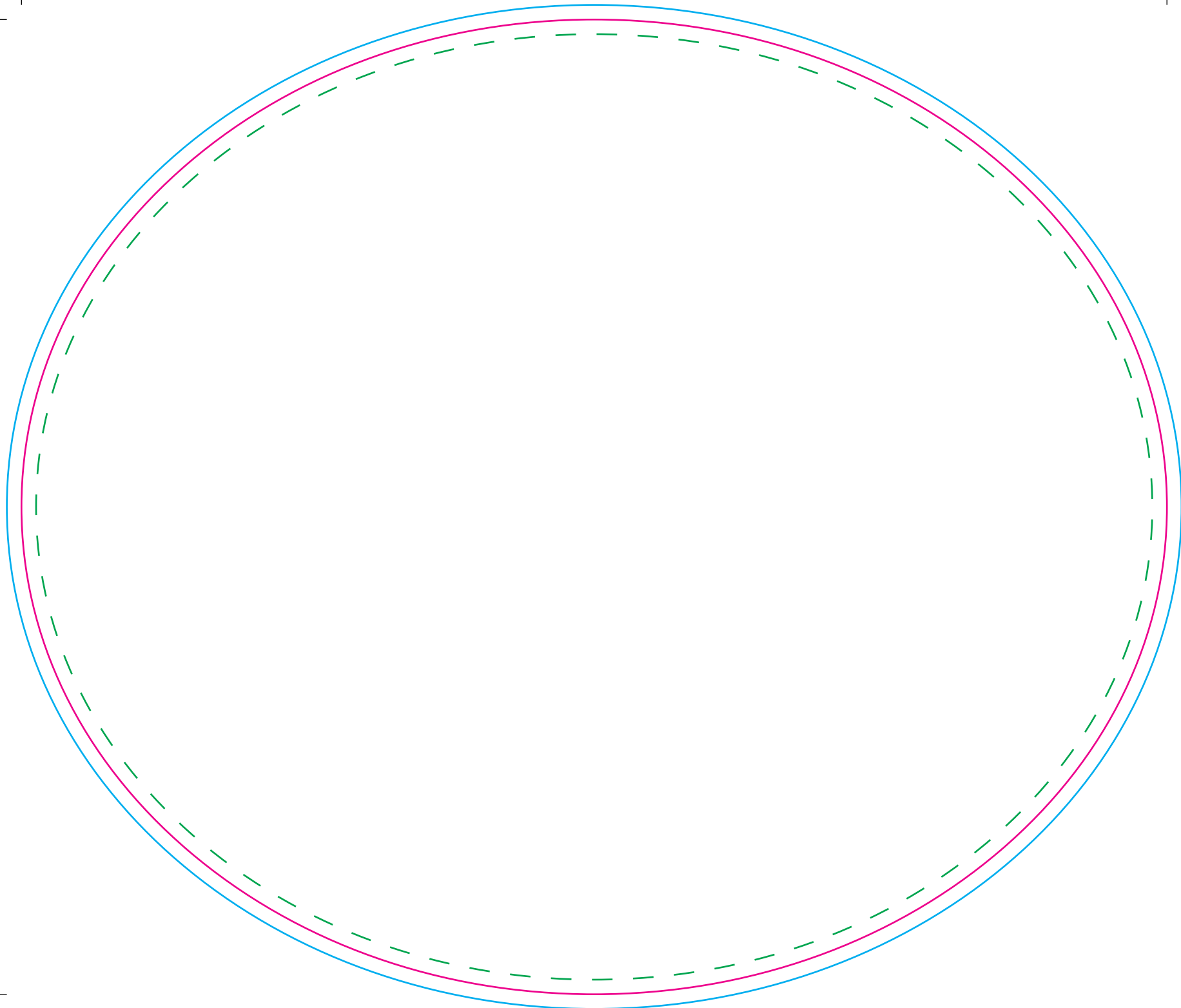
# Parkes

display | print | expo

**01767 603930**

sales@**parkes**expo.com

www.**parkes**expo.com



## Mat

**Tool No:** 1090 & DC0173

**Shape:** Oval

**Cut Size -**

**Width:** 235mm

**Height:** 200mm

**Artwork with Bleed -**

**Width:** 241mm

**Height:** 206mm

--- Please keep all live matter such as text, logos and other important images within this area.

**This dieline represents a current finishing tool. Any alterations to this dieline may incur additional charges.**

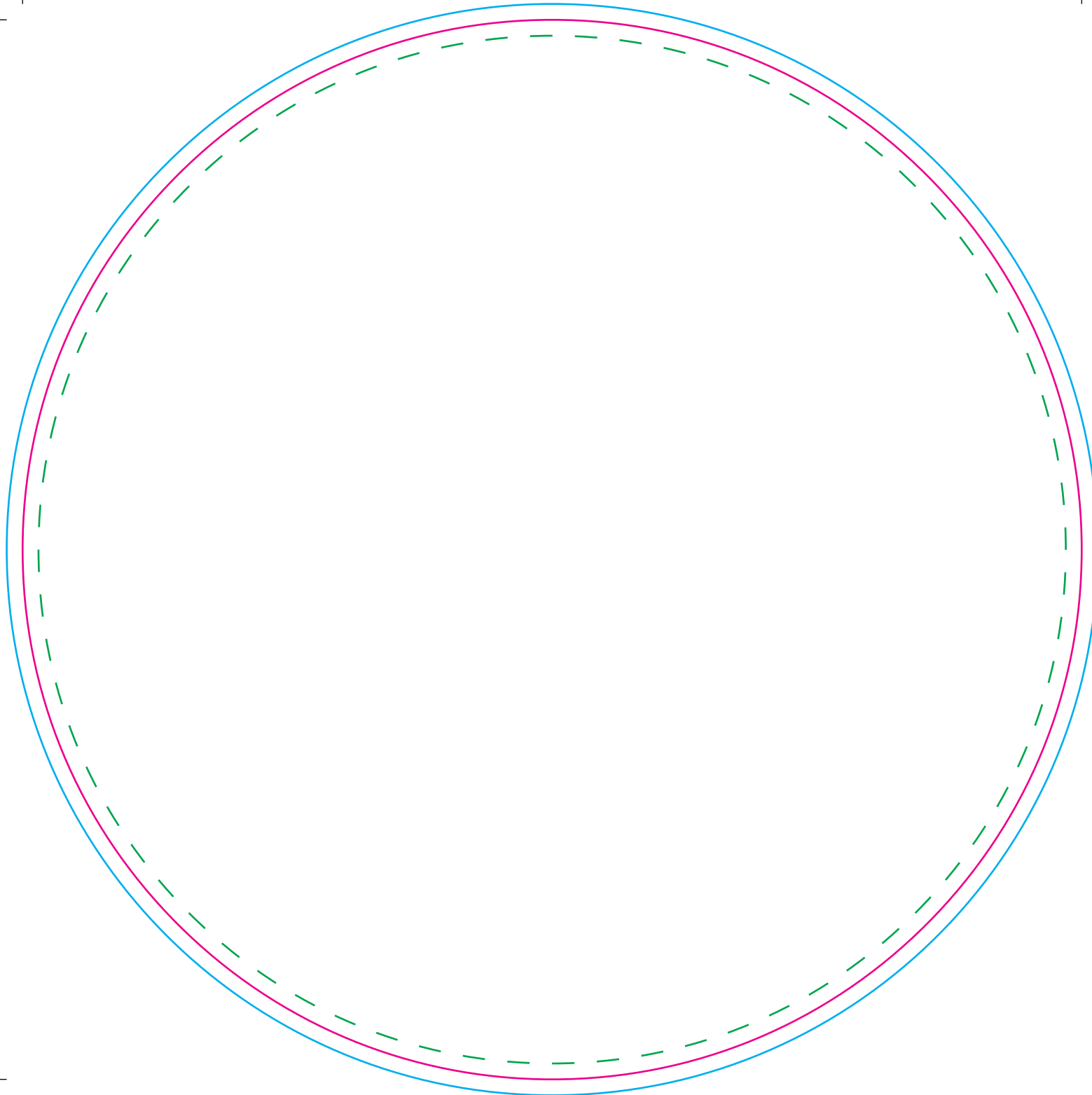
# Parques

display | print | expo

**01767 603930**

sales@[parkesexpo.com](mailto:sales@parkesexpo.com)

[www.parkesexpo.com](http://www.parkesexpo.com)



## Mat

**Tool No:** 862 & DC0005

**Shape:** Circle

**Cut Size -**

**Width:** 200mm

**Height:** 200mm

**Artwork with Bleed -**

**Width:** 206mm

**Height:** 206mm

--- Please keep all live matter such as text, logos and other important images within this area.

**This dieline represents a current finishing tool. Any alterations to this dieline may incur additional charges.**

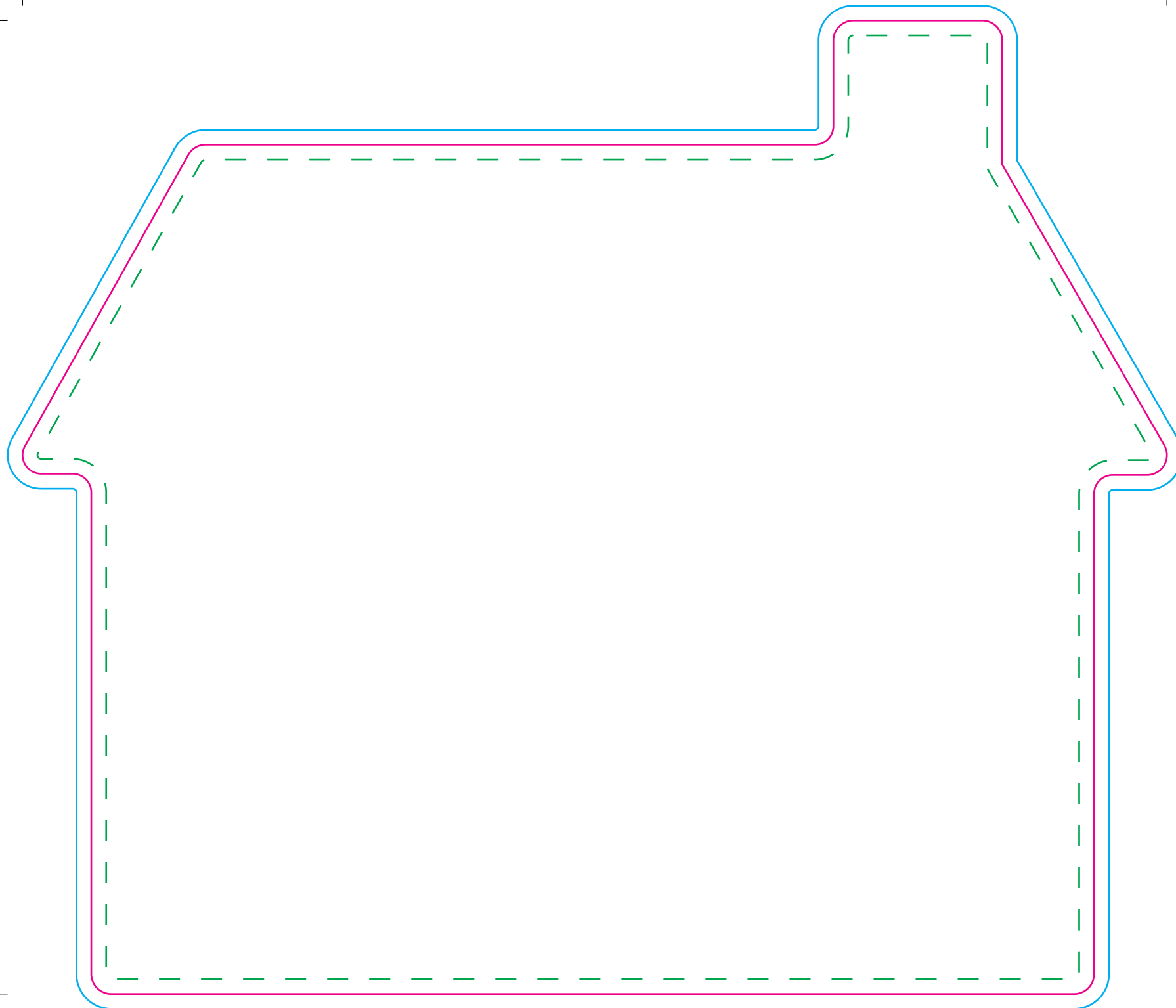
# Parkes

display | print | expo

**01767 603930**

sales@parkesexpo.com

www.parkesexpo.com



## Mat

**Tool No:** 3591 & DC0221  
**Shape:** House - Chimney Right

**Cut Size -**  
**Width:** 230.5mm  
**Height:** 196mm

**Artwork with Bleed -**  
**Width:** 236.5mm  
**Height:** 202mm

--- Please keep all live matter such as text, logos and other important images within this area.

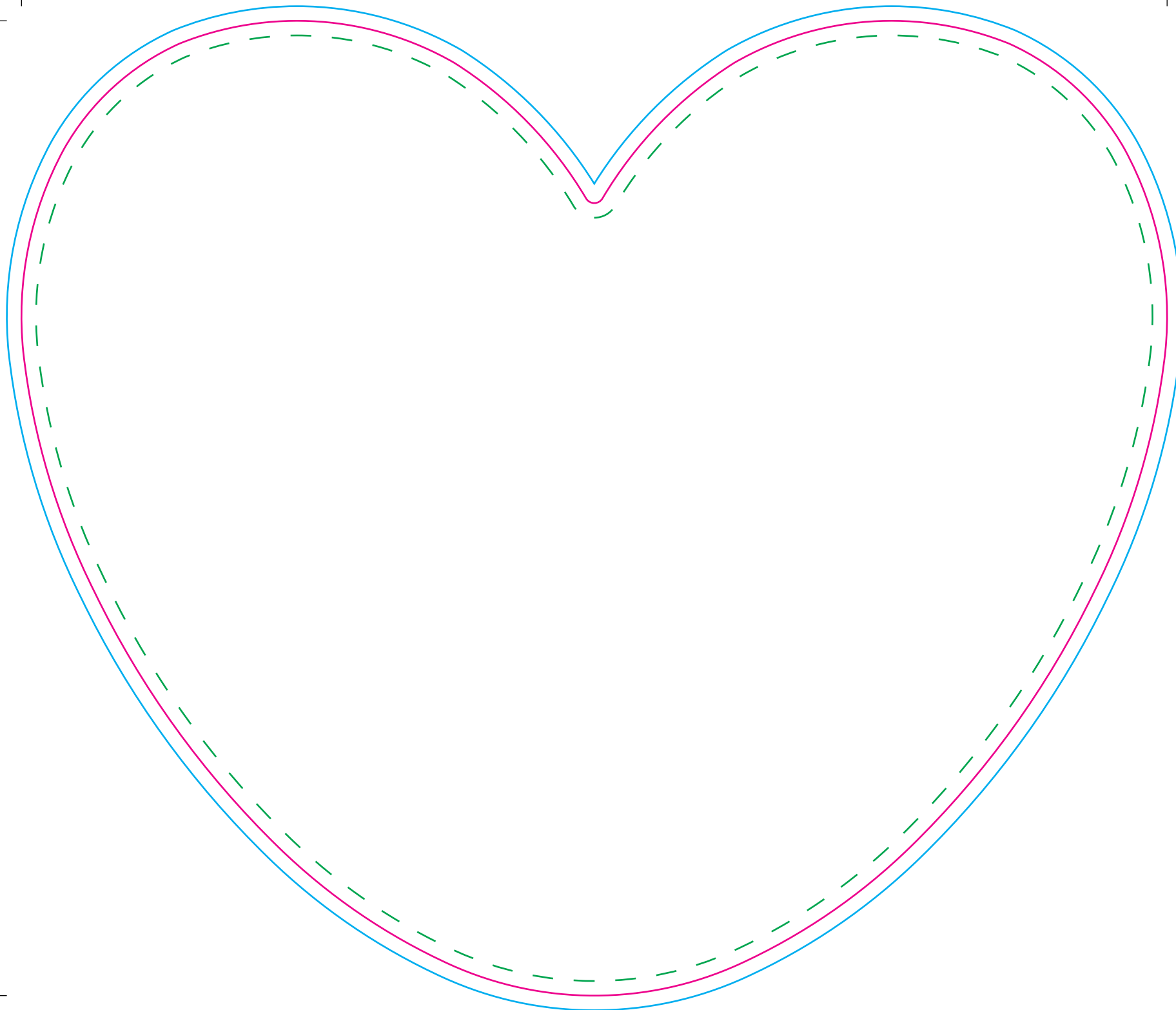
This dieline represents a current finishing tool. Any alterations to this dieline may incur additional charges.

# Parkes

display | print | expo

**01767 603930**

sales@[parkesexpo.com](mailto:sales@parkesexpo.com)  
[www.parkesexpo.com](http://www.parkesexpo.com)



## Mat

**Tool No:** 3489 & DC0312

**Shape:** Heart

**Product Size -**

**Width:** 235mm

**Height:** 200mm

**Artwork with Bleed -**

**Width:** 241mm

**Height:** 206mm

--- Please keep all live matter such as text, logos and other important images within this area.

This dieline represents a current finishing tool. Any alterations to this dieline may incur additional charges.

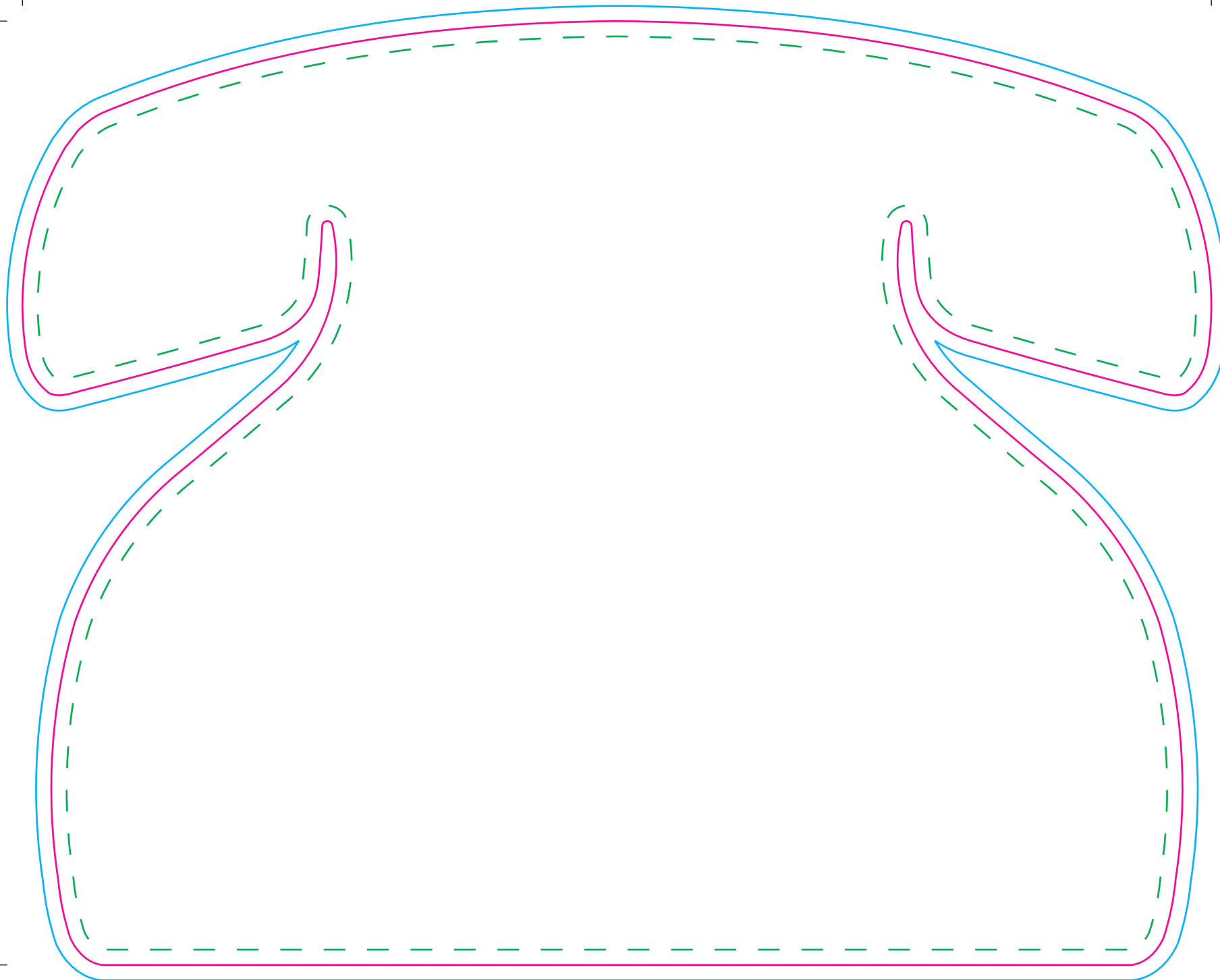
# Parkes

display | print | expo

**01767 603930**

sales@parkesexpo.com

www.parkesexpo.com



## Mat

**Tool No:** 2423 & DC0067

**Shape:** Telephone

**Cut Size -**

**Width:** 233mm

**Height:** 185mm

**Artwork with Bleed -**

**Width:** 239mm

**Height:** 191mm

- - - Please keep all live matter such as text, logos and other important images within this area.

**This dieline represents a current finishing tool. Any alterations to this dieline may incur additional charges.**

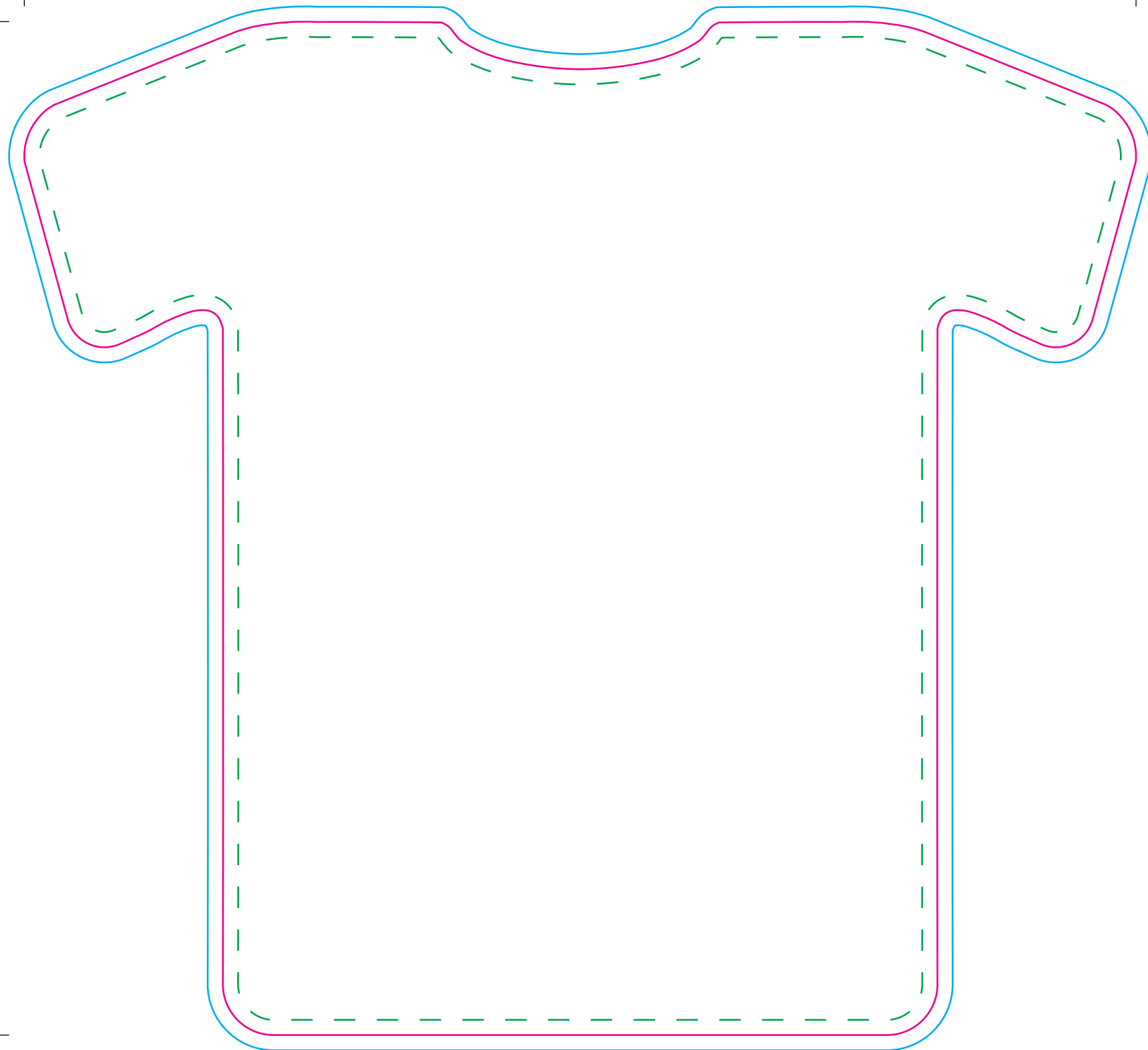
# Parkes

display | print | expo

**01767 603930**

sales@[parkesexpo.com](mailto:sales@parkesexpo.com)

[www.parkesexpo.com](http://www.parkesexpo.com)



## Mat

**Tool No:** 3375 & DC0056

**Shape:** Football Shirt

**Cut Size -**

**Width:** 219.5mm

**Height:** 200mm

**Artwork with Bleed -**

**Width:** 225.5mm

**Height:** 206mm

--- Please keep all live matter such as text, logos and other important images within this area.

**This dieline represents a current finishing tool. Any alterations to this dieline may incur additional charges.**

# Parkes

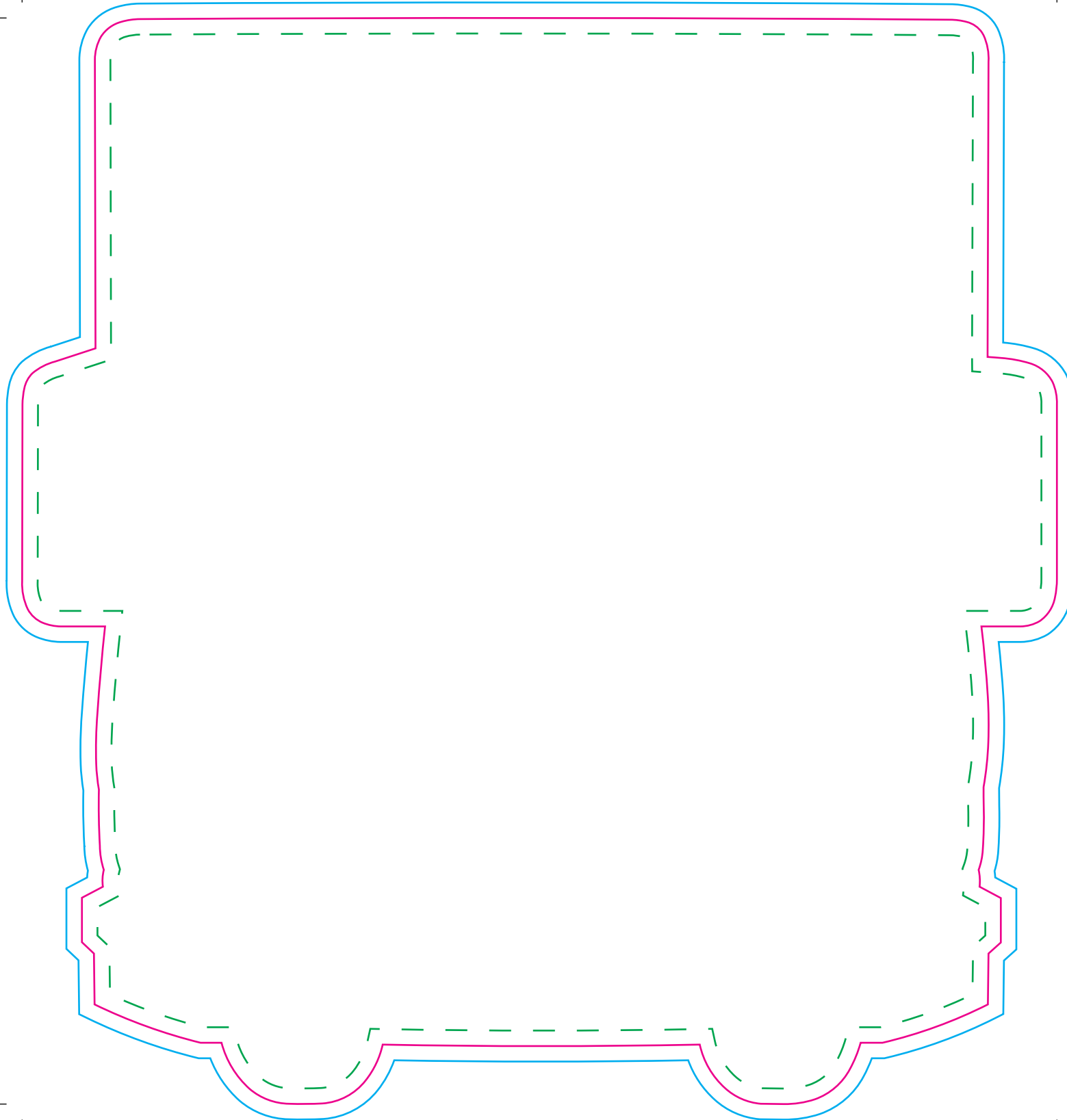
display | print | expo

**01767 603930**

sales@[parkesexpo.com](mailto:sales@parkesexpo.com)

[www.parkesexpo.com](http://www.parkesexpo.com)





## Mat

**Tool No:** 3682 & DC0146

**Shape:** Lorry

**Cut Size -**

**Width:** 200mm

**Height:** 210mm

**Artwork with Bleed -**

**Width:** 206mm

**Height:** 216mm

- - - Please keep all live matter such as text, logos and other important images within this area.

**This dieline represents a current finishing tool. Any alterations to this dieline may incur additional charges.**

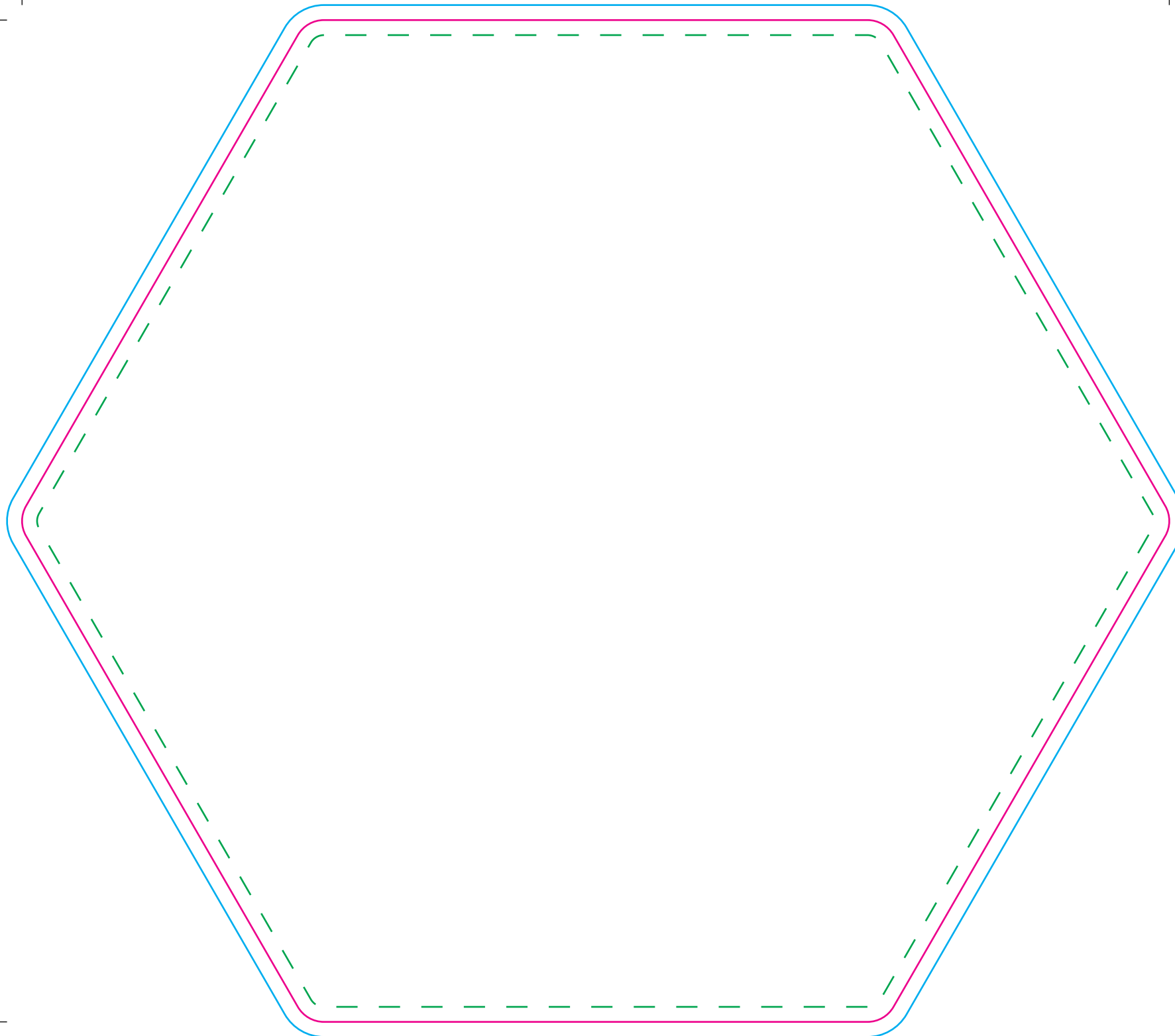
# Parkes

display | print | expo

**01767 603930**

sales@[parkesexpo.com](mailto:sales@parkesexpo.com)

[www.parkesexpo.com](http://www.parkesexpo.com)



### Mat

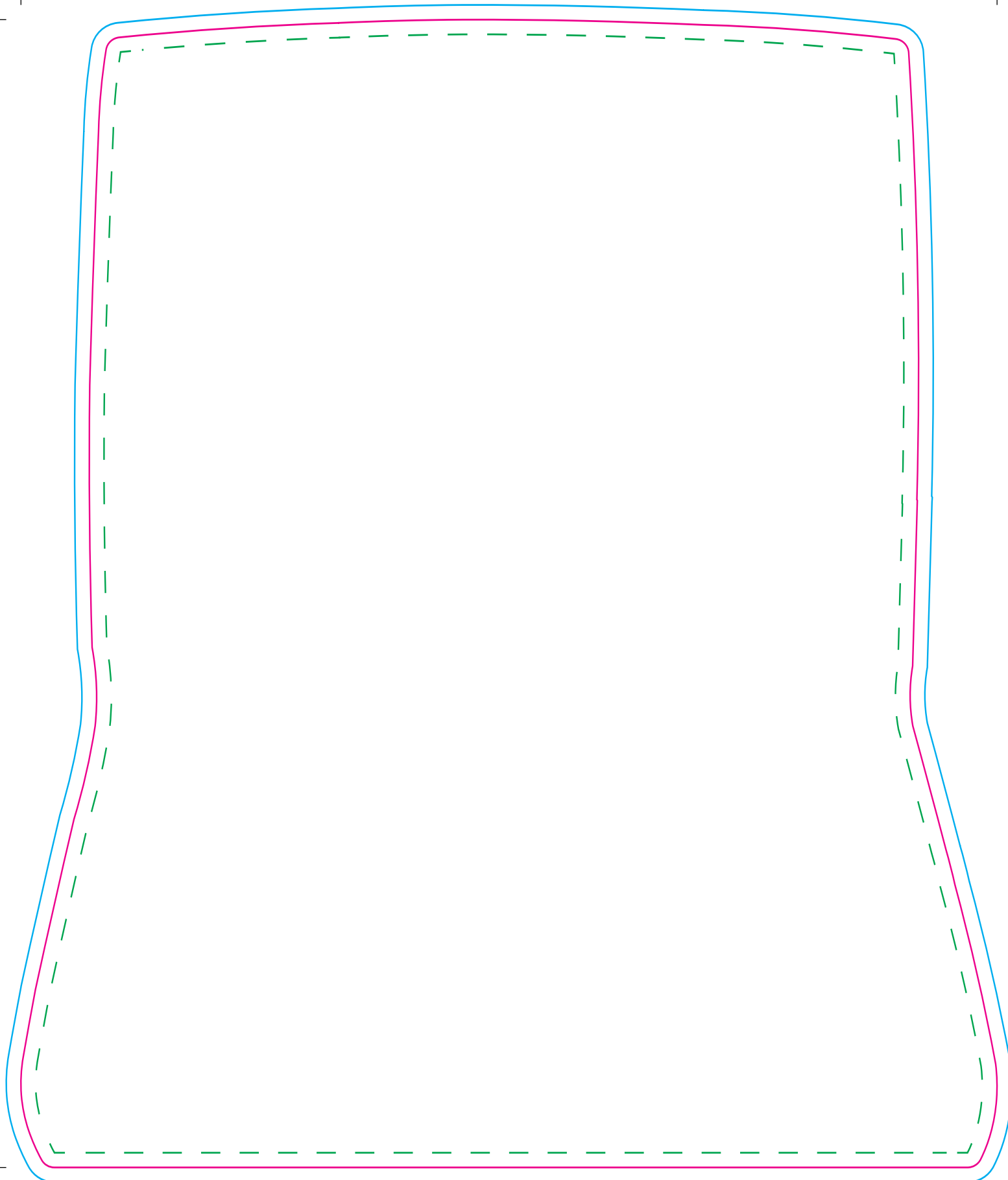
<b>Tool No:</b>	2160 • DC0262 • (2228KA)
<b>Shape:</b>	Hexagon
<b>Cut Size -</b>	
<b>Width:</b>	229mm
<b>Height:</b>	200mm
<b>Artwork with Bleed -</b>	
<b>Width:</b>	235mm
<b>Height:</b>	206mm

- - - Please keep all live matter such as text, logos and other important images within this area.

**This dieline represents a current finishing tool. Any alterations to this dieline may incur additional charges.**

**Parkes**  
display | print | expo

**01767 603930**  
sales@parkesexpo.com  
www.parkesexpo.com



## Mat

**Tool No:** 1996 • DC0434  
**Shape:** Laptop

**Cut Size -**  
**Width:** 199mm  
**Height:** 234mm

**Artwork with Bleed -**  
**Width:** 205mm  
**Height:** 240mm

- - - Please keep all live matter such as text, logos and other important images within this area.

**This dieline represents a current finishing tool. Any alterations to this dieline may incur additional charges.**

# Parkes

display | print | expo

**01767 603930**

sales@[parkesexpo.com](mailto:sales@parkesexpo.com)  
[www.parkesexpo.com](http://www.parkesexpo.com)



## Mat

**Tool No:** 3338 • DC0327

**Shape:** Pillow

**Cut Size -**

**Width:** 235mm

**Height:** 201mm

**Artwork with Bleed -**

**Width:** 241mm

**Height:** 207mm

--- Please keep all live matter such as text, logos and other important images within this area.

**This dieline represents a current finishing tool. Any alterations to this dieline may incur additional charges.**

# Parkes

display | print | expo

**01767 603930**

sales@[parkesexpo.com](mailto:sales@parkesexpo.com)

[www.parkesexpo.com](http://www.parkesexpo.com)