

# Pelican Display System

**Parkes**  
display&expo

The Pelican is a very popular and highly versatile tension banner stand that is lightweight, portable and very simple to use.

It has adjustable height and is flexible enough to carry a wide variety of graphics. Each banner can be linked to another to create a wide-format graphic wall.

## Features & Benefits

- ✓ Variable height telescopic pole
- ✓ Additional panels can be linked together, maximum of 3 recommended
- ✓ Stable cast base foot
- ✓ Portable, lightweight and quick to assemble
- ✓ No tools required
- ✓ Sizes available: 2200 (h) x 800/1000mm (w)
- ✓ Packs into free carry bag and tube for storage and transportation
- ✓ Special package discount for multiple quantities
- ✓ Full design and artwork enhancement service available



Banners can be linked together to form a seamless wall



The Pelican is height adjustable from 850mm - 2200mm

## We're here to help

Need help with the design of your display system?  
Call our dedicated sales team on **01767 603930** for advice



### Hardware Specifications

Assembled dimensions  
2200 (h) x 800mm (w)  
Weight: 4.5kg

### Hardware Specifications

Assembled dimensions  
2200 (h) x 1000mm (w)  
Weight: 5kg

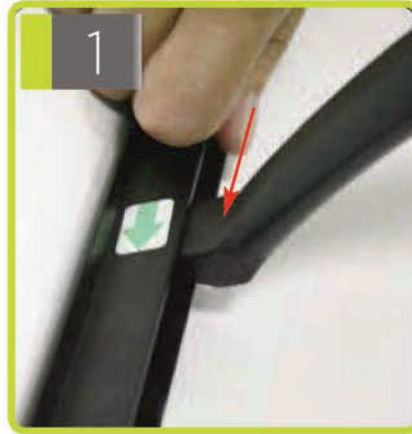
### Additional Options

Custom sizes also made - Call our sales team on 01768 603930 and tell us what you need

# Assembly Instructions



Kit includes: top rail, bottom rail, stabilising foot, telescopic poles, wrap and carry bag/tube



1 Take the stabilising foot and slide into the bottom rail in the direction of the green arrow until it is centrally positioned and locked into place.



2 Slot the bottom of the telescopic pole into the foot.



3 Lengthen the pole by pulling out to the desired height and then twist the thumb screw to secure pole into place



4 Carefully unroll the graphic and secure into position by locating the top rail hole with the telescopic pole.



5 Repeat Step 3 if necessary to tension the graphic image.

6

If joining panels together:

- Take out the blanking ends and insert the magnetic rods to one graphic
- Line up and bring the two together
- Space the rear magnetic joining bars along the seam to hold the two graphics together



**Quick & Easy**



**Flexible & Portable**



**Exhibition Solutions**