

# TheStarling

**Parkes**  
display&expo

...the perfect choice for your Counter Display stand needs

The Starling is a popular counter and a very versatile exhibition or promotional unit with a lockable door option.

## Features & Benefits

- ✔ *Hard wearing model*
- ✔ *Portable, lightweight and quick to assemble*
- ✔ *Sizes available:  
1300mm (h) x 665mm (w) x 480mm (d)*
- ✔ *Tops are available in in Birch, Black, Silver or White*
- ✔ *Acrylic angled top shelf*
- ✔ *Carry bag available for storage and transportation*
- ✔ *Special package discount for multiple quantities*
- ✔ *Full design and artwork enhancement service available*



Exhibiting  
**Made  
Smarter**

## We're here to help

Need help with the design of your display system?  
Call our dedicated sales team on **01767 603930** for advice

Parkes Print & Design | Tel: 01767 603930 | sales@parkesprintgroup.com | 41 Hitchin Street | Biggleswade | Beds | SG18 8BE

**Parkes**  
01767 603930

**Hardware** Specifications  
Assembled dimensions:  
1300 (h) x 665 (w) x 480mm (d)

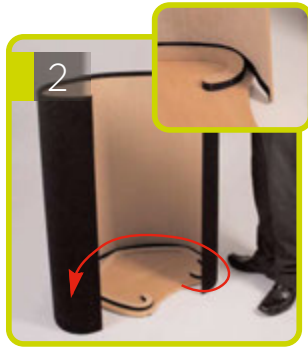
**Weight**  
Hardware weight:  
20kg  
Load bearing weight:  
50kg approx



# Assembly Instructions



Kit includes: Top, base, internal shelf, 2 x wrap, acrylic shelf, linear post, screws, allen key



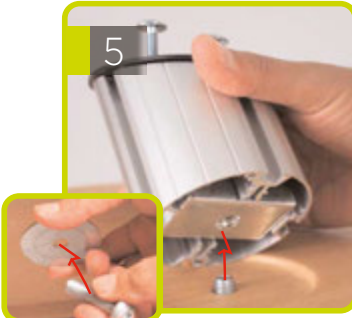
Attach the larger wrap around the base, following the mounted shape



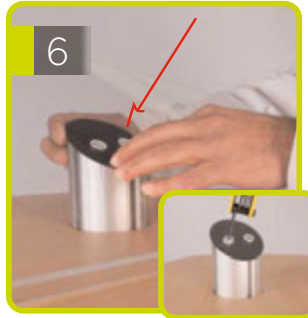
Lower the internal shelf into the top of the wrap and secure against hook and loop.



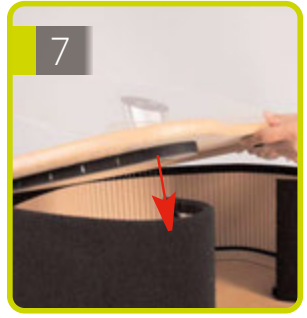
Attach the smaller wrap to the top of the shelf, following the shape of the mount.



Insert screw and washer through underside of top and into the Linear post.



Lower acrylic shelf onto post and secure into position with screws provided.



Attach top to small wrap, feeding it around the hook and loop mount, press securely.



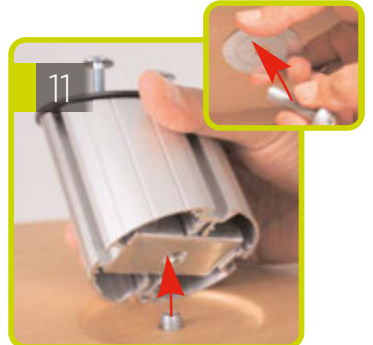
Kit includes: Top, base, wrap, acrylic shelf, linear post, screws



Attach the wrap around the base, following the mounted shape



Lower the top into the top of the wrap and secure against hook and loop.



Insert screw and washer through underside of top and into the Linear post.



Lower acrylic shelf onto post and secure into position with screws and allen keys provided.

## We're here to help

Need help with the design of your display system?  
Call our dedicated sales team on **01767 603930** for advice