

The Raven

Parkes
display&expo

...the perfect choice for your Indoor workstation needs

The Raven is a curved counter which incorporates an LCD mount and an acrylic top shelf, making it ideal as an information point or promotional unit.

Features & Benefits

- ✔ **Size**
1520mm to top of LCD post (h)
x 850mm (w) x 600mm (d)
- ✔ **Can be used as an open or closed back unit**
- ✔ **Tops are available in Birch, Black or Silver thermoformed finishes**
- ✔ **Load bearing up to 50kgs**
- ✔ **Units available in a choice of luxury foam backed loop nylon. Smooth fabric wraps and beech or aluminium tambour wraps available at additional cost**
- ✔ **Internal shelf available**
- ✔ **Cable management port included**
- ✔ **Carry bag available for transportation**
- ✔ **Special package discount for multiple quantities**
- ✔ **Full design and artwork enhancement service available**



The Raven Indoor Workstation

**Exhibiting
Made
Smarter**

Hardware Specifications

Assembled Dimensions
1520mm to top of LCD post (h)
x 850mm (w) x 600mm (d)

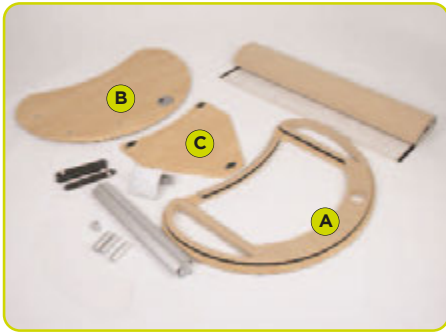
Weight

7.5kg approx
Load Bearing: 75kg

Additional Options

Internal shelf available at extra cost

Assembly Instructions



Kit includes: Base (A), top (B), internal shelf (C), 3 x Twist & Lock posts, wrap, linear post, monitor bracket, acrylic top shelf stand-offs, 3 x screws, fixings, 2 x Allen keys



1 Place the base on the floor and feed the wrap around the hook and loop mounted area.



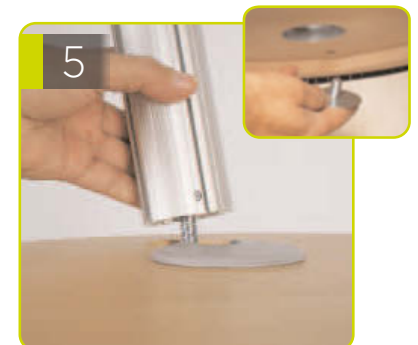
2 Take the top and lower onto the wrap, inserting the hook and loop mount into the wrap securely



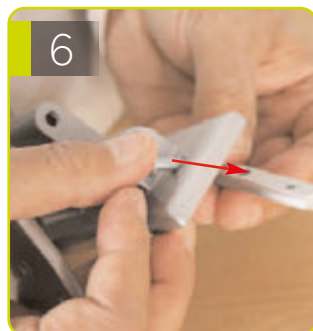
3 Take the internal shelf and twist in the 3 Twist & Lock posts in the slots provided.



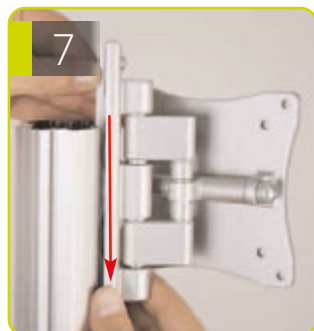
4 Lift the shelf into the unit and twist in each post to secure the shelf



5 Fasten the linear post to the top with the screw and washer



6 Take the monitor bracket and screw loosely into the linear slider



7 Slide the assembled bracket down the post into position and tighten screws to secure.



8 Complete unit by attaching linear post top and cable management port into place.



9 Take each stand-off and screw onto the top of each fixing supplied.



10 Lower the acrylic shelf onto the top of the 3 standoffs.



11 Secure into position by screwing in the tops of each stand-off

*NB - For the **standard unit** without an internal shelf, miss out steps 3 and 4.*

