



# CounterFold

Quick and easy to build, fold out counter system.



**Parkes**  
01767 603930

Print | [parkesprintgroup.com](http://parkesprintgroup.com)  
Gifts | [parkespromo.com](http://parkespromo.com)  
Expo | [parkesexpo.com](http://parkesexpo.com)



# CounterFold | modular counter system

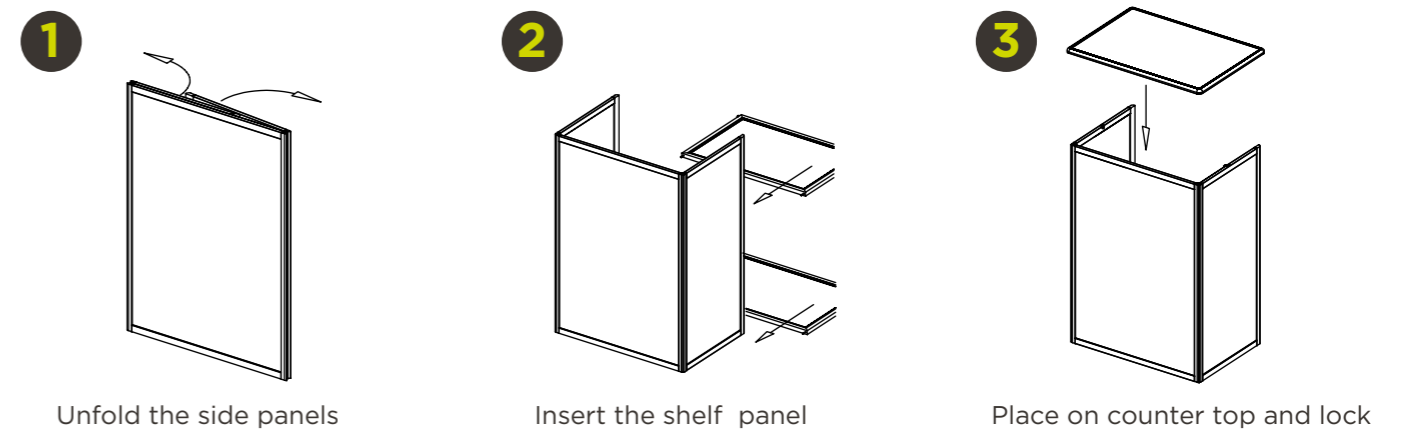


The **CounterFold** is simplicity itself, the counter unfolds and slots together. Ideal for adding the finishing touch to exhibitions and displays.



- ✓ **Robust** metal construction with metal counter top
- ✓ **Replaceable rigid PVC graphics** come already fitted
- ✓ **Portable and compact** everything folds into flat carry bag/transport case
- ✓ **Great storage capacity** and supplied with shelf
- ✓ **Optional** locking door
- ✓ **Modular and Reconfigurable** available in a variety of sizes

## Assembly in 3 easy steps



## optional extras



## CF-4-H Folding Counter



Other **CounterFold** sizes are available to adapt to your exhibition space.

CF-1-H Folding Counter



772 x 515 x 1050mm

CF-2-H Folding Counter



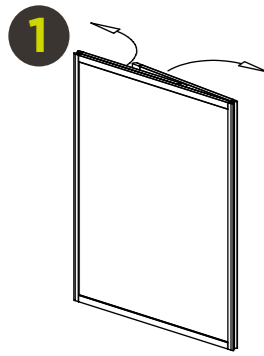
1070 x 515 x 1050mm

CF-6-H Folding Counter

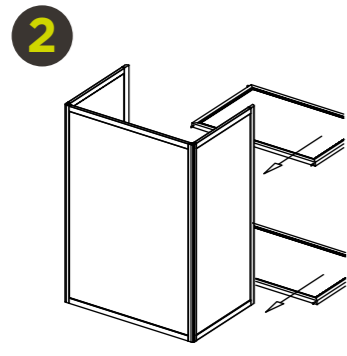


515 x 515 x 1050mm

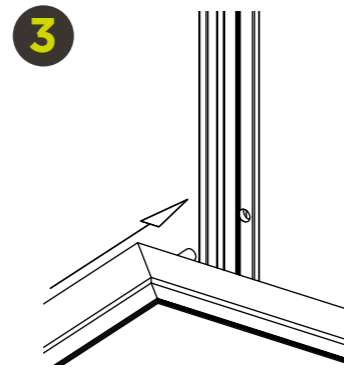
# CounterFold | assembly instructions



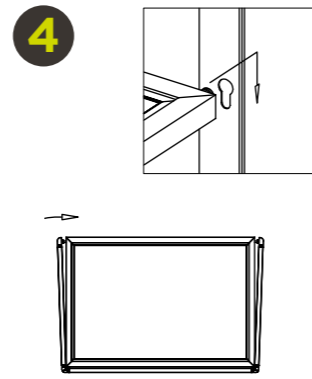
1 Unfold the side panels.



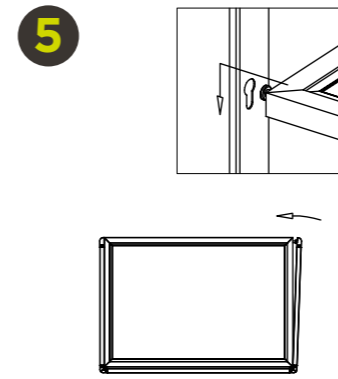
2 Insert the bottom shelf panel. *nb if there is a second shelf, this just slots in on the cross bars.*



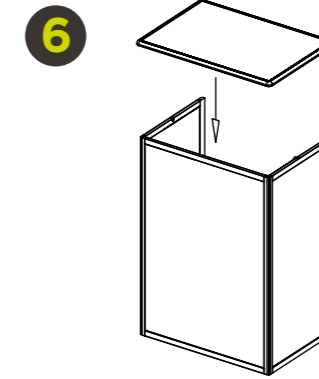
3 The shelf panels front pins locate in the holes shown above.



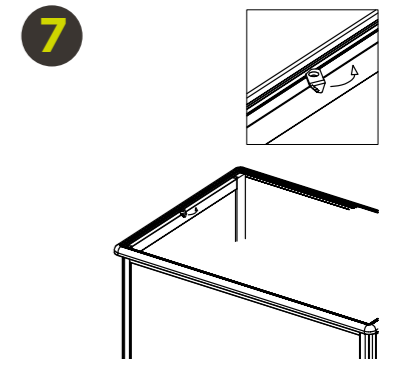
4 The side pins then go through the side keyholes.



5 Repeat on the other side and secure by pushing down into position.

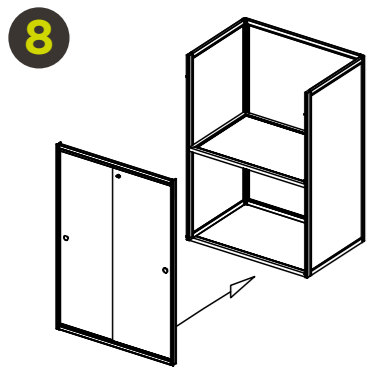


6 Place on the counter top.

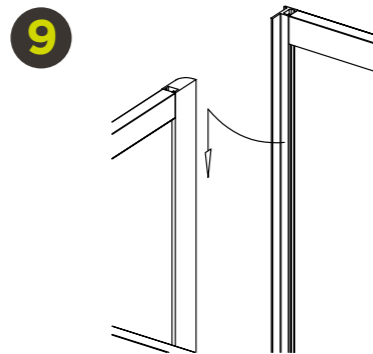


7 Fix into place by twisting up the locking plates.

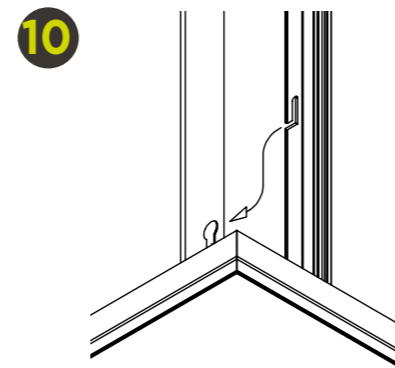
## adding sliding doors



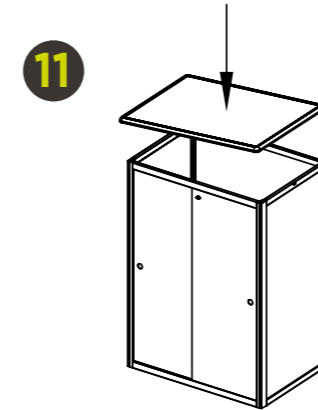
8 To add doors to the counter remove the top (7) and position the doors.



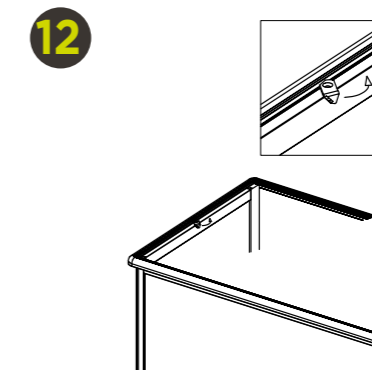
9 Slide them down the inside of the rear edge of the counter.



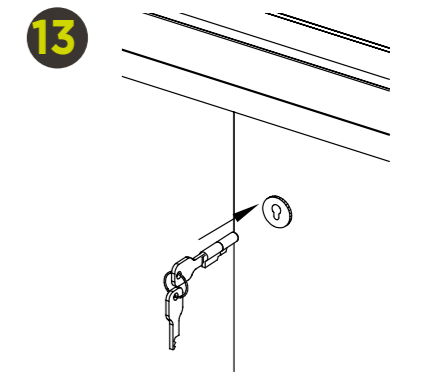
10 Then manoeuvre the slot shown down between the shelf side pin and the inside of the key hole.



11 Now add the counter top and fix into place as #7.

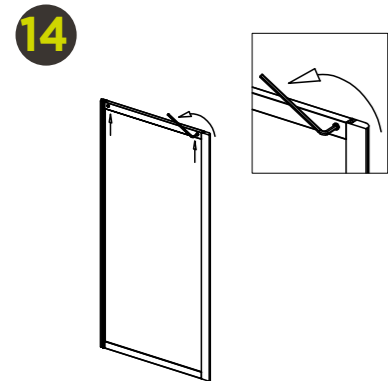


12 Fix into place by twisting up the locking plates.

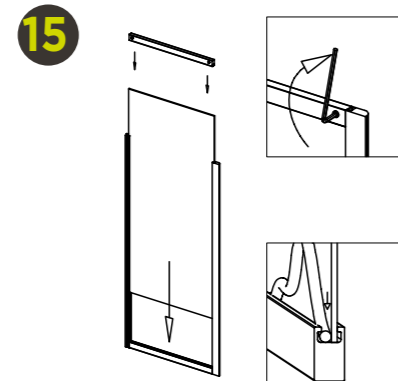


13 Use the keys provided to open the doors and access the counter.

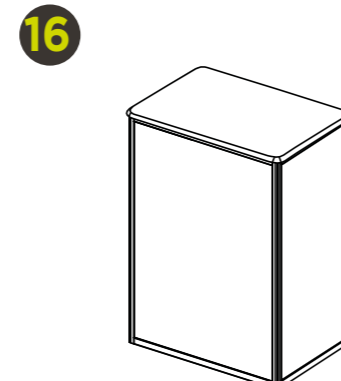
## adding graphic panels



14 To change graphic panels remove the top bar of each panel using the allen key.



15 Slide in the graphic and re-secure the top bar. Insert graphic tensioners shown behind the graphic.



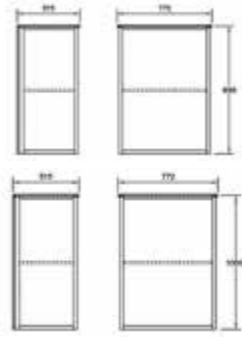
16 Ready to go...



# CounterFold | modules options

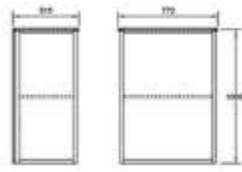
## CF-1-L

Folding counter 772 x 515 x 895mm  
Graphic panel size 1 x 697 x 842  
+ 2 x 432 x 842mm



## CF-1-H

Folding counter 772 x 515 x 1050mm  
Graphic panel size 1 x 697 x 997  
+ 2 x 432 x 997mm



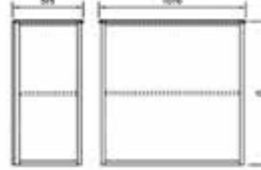
## CF-2-L

Folding counter 1070 x 515 x 895mm  
Graphic panel size 1 x 995 x 842  
+ 2 x 432 x 842mm



## CF-2-H

Folding counter 1070 x 515 x 1050mm  
Graphic Panel Size 1 x 995 x 997  
+ 2 x 432 x 997mm



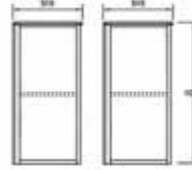
## CF-6-L

Folding counter 515 x 515 x 895mm  
Graphic panel size 2mm: 1 x 709 x 842  
+ 2 x 416 x 842mm



## CF-6-H

Folding counter 515 x 515 x 1050mm  
Graphic panel size 1 x 2mm 709 x 997  
2 x 3mm 416 x 997



## CF-4-L

Folding counter, curved 1072 x 515 x 895mm  
Graphic panel size 1 x 1053 x 842mm  
+ 2 x 432 x 842mm



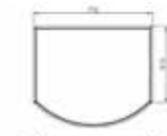
## CF-4-H

Folding counter, curved 1072 x 515 x 1050mm  
Graphic panel size 1 x 1053 x 997mm  
+ 2 x 432 x 997mm



## CF-9-L

Folding counter, curved front 772 x 658 x 895mm  
Graphic panel size 1 x 788 x 842mm  
+ 2 x 397 x 842



## CF-9-H

Folding counter, curved front 772 x 658 x 1050mm  
Graphic panel size 1 x 778 x 997mm  
+ 2 x 397 x 998



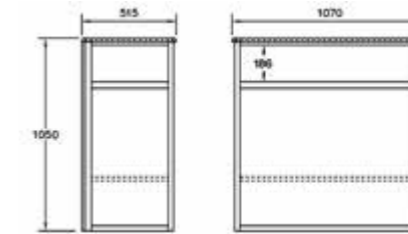
## CF-3-L

Folding counter with top box  
Folding counter 1070 x 515 x 895mm  
+ top box = 1103mm  
Graphic panel size 1 x 995 x 842  
+ 2 x 432 x 842mm



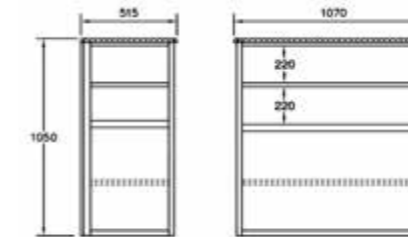
## CF-12-H

Folding showcase 1070 x 515 x 1050mm  
Graphic panel size 1 x 996 x 778  
+ 2 x 433 x 788mm  
Acrylic panel size 1 x 996 x 200  
+ 2 x 433 x 200mm



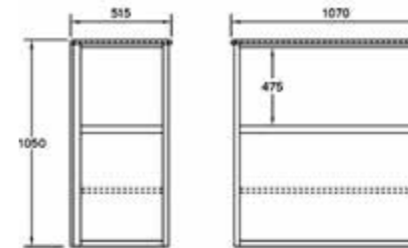
## CF-12-B

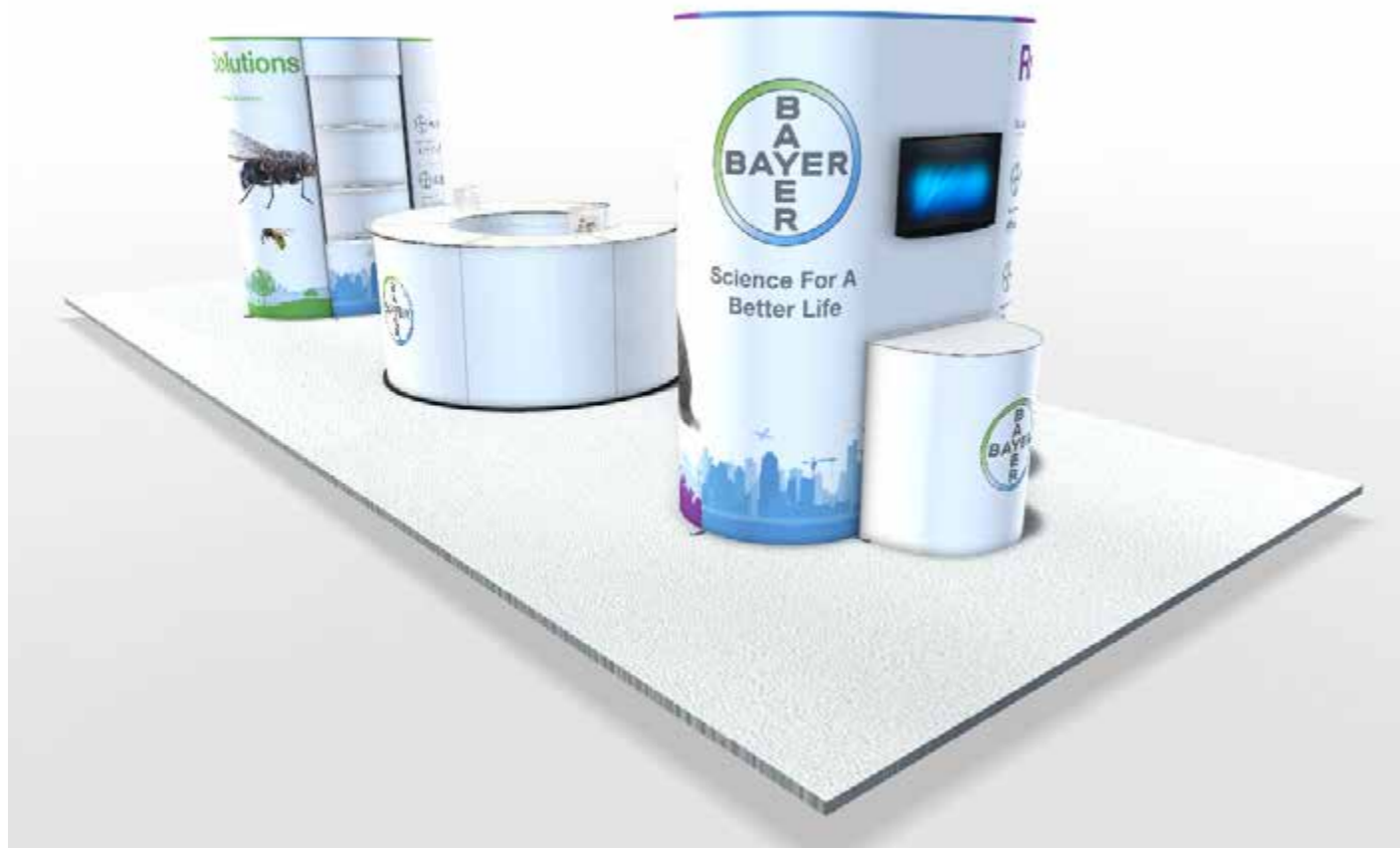
Folding showcase 1070 x 515 x 1050mm  
Graphic panel size 1 x 996 x 489  
+ 2 x 433 x 489mm  
Acrylic panel size 1 x 996 x 489  
+ 4 x 433 x 234mm



## CF-12-C

Folding showcase 1070 x 515 x 1050mm  
Graphic panel size 1 x 996 x 489  
+ 2 x 433 x 489mm  
Acrylic panel size 1 x 996 x 489  
+ 2 x 433 x 489mm

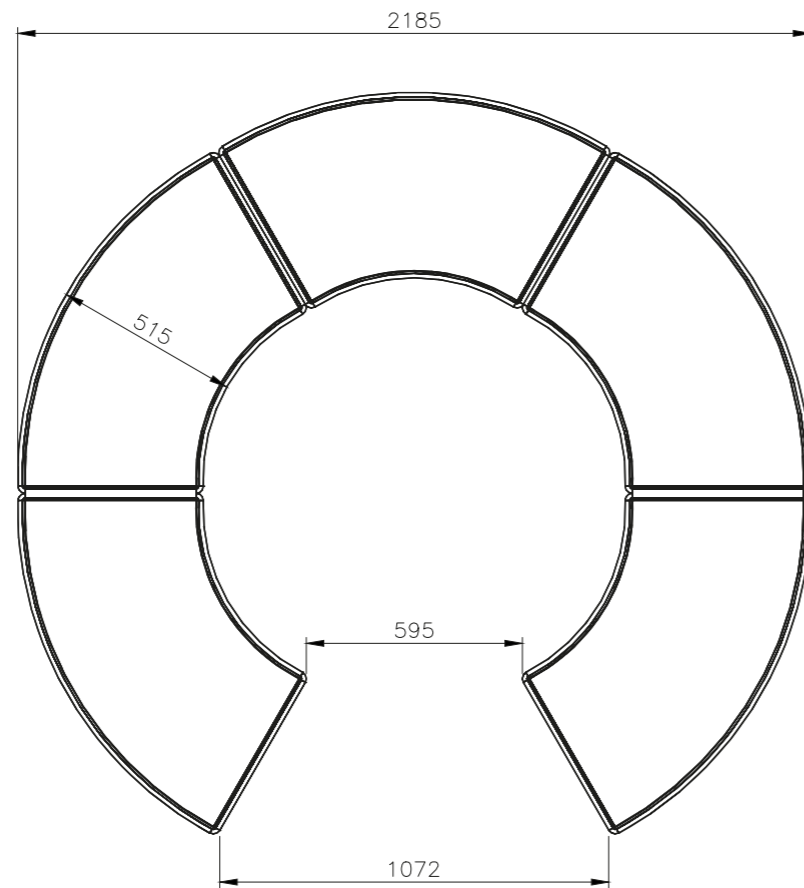




**CF-4-H**

Folding counter, curved 1072 x 515 x 1050mm

Graphic panel size 1 x 1053 x 997mm  
+ 2 x 432 x 997mm (3kg)



Can be used as five individual counters  
Or joined together to create a horseshoe  
large counter



*Featured above: The FlexiCurve Island Displays and the CounterCurve Counter. The CounterCurve is another great modular counter which can be configured as a horseshoe/circular counter or many other shapes. Please call 01767 603930 for a free visual or more details.*



## CounterFold | showcases

- ✓ **Fast to assemble** showcases
- ✓ **Robust** showcases come with the option of clear, white or printed panels
- ✓ **Compact to transport** - Folds into a carry bag or wheeled transport case
- ✓ **Showcase Frames** made from anodised aluminium making them robust for reuse
- ✓ **Towers** come with top illumination
- ✓ **Whole range of sizes** (see below) or custom sizes available



**CounterFold |** Regular sizes available with clear or printed panels. Custom sizes also available on request, please email or phone **01767 603930** for pricing.

Part No.	Description
CF-1-L	Folding counter 772 x 515 x 850mm
CF-1-H	Folding counter 772 x 515 x 1050mm
CF-2-L	Folding counter 1070 x 515 x 895mm
CF-2-H	Folding counter 1070 x 515 x 1050mm
CF-6-L	Folding counter 515 x 515 x 895mm
CF-6-H	Folding counter 515 x 515 x 1050mm
CF-4-L	Folding counter, curved 1072 x 515 x 895mm
CF-4-H	Folding counter, curved 1072 x 515 x 1050mm
CF-9-L	Folding counter, curved front 772 x 658 x 895mm
CF-9-H	Folding counter, curved front 772 x 658 x 1050mm
CF-3-L	Folding counter with top box
CF-12-H	Folding showcase 1070 x 515 x 1050mm
CF-12-B	Folding showcase 1070 x 515 x 1050mm
CF-12-C	Folding showcase 1070 x 515 x 1050mm
CF-13-A	Folding acrylic showcase
CF-13-W	Folding white/acrylic showcase
CF-13-SC	Folding acrylic showcase counter

### Optional Extras

CF-1-SD	Lockable sliding door set
CF-2-CB	Protective shoulder carry bag
CF-3-TC	Wheeled Transport Case

Custom sizes can be made to order, please ask our sales team for details on **01767 603930**



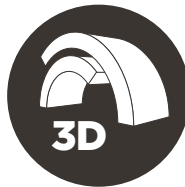
**ASK  
FOR A FREE  
DEMONSTRATION**

# Parkes

display&expo



**Exhibit Smarter**



**Inspiring Design**



**Quick & Easy**



**Quick & Easy**



**Flexible & Portable**



**Exhibition Solutions**