

ShellFix

Parkes
display&expo

The lightest and most compact way to create a seamless graphic wall

This system utilises all the common shell scheme post systems.

A modular frame is built to fit your stand and is supplied with concealed brackets to fasten the two together.



ShellFix frame fixes inside



ShellFix brackets attach to the Shell Scheme frame



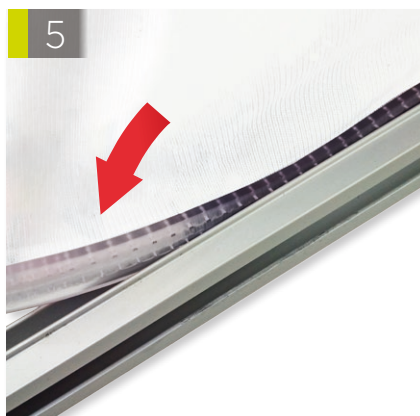
The brackets then slot into the ShellFix frame



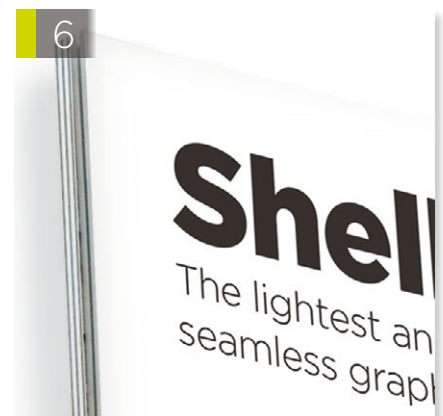
The brackets hold the ShellFix frame securely in place



To spread out the graphic evenly on the frame. Start in the top corner pushing in about 75mm at a time then move to the opposite lower corner and do the same. Repeat this with the remaining two corners



Then midway along each of the four sides, push 75mm of the beading into the frame. Once all corners and mid points are in, continue all the way around to secure the graphic nice and evenly.



All fixings are hidden behind the slimline graphic

Shell Scheme Specifications

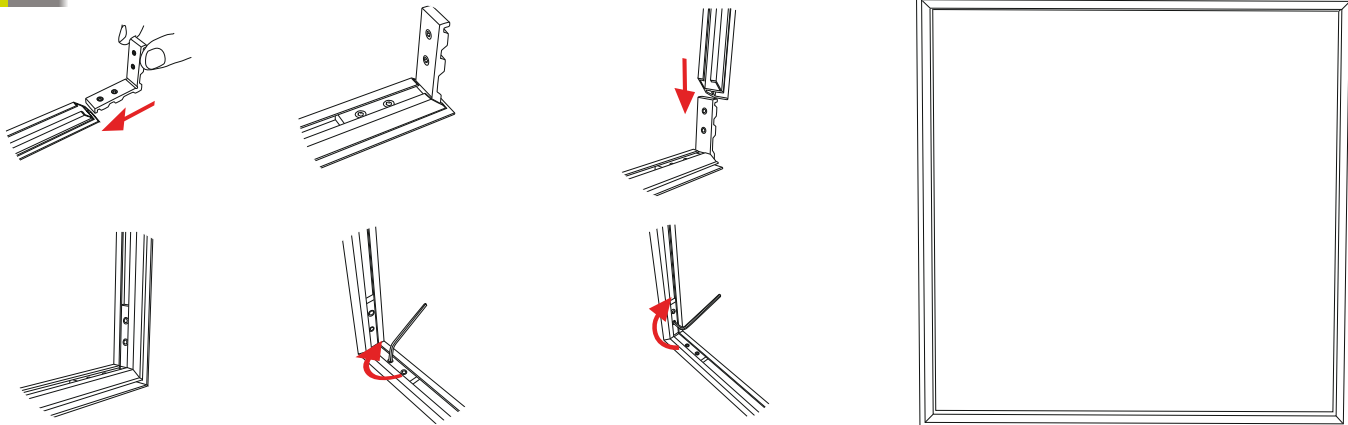
At **Parkes** we can help you tailor make your display to meet your requirements. Tell us the size of your Shell Scheme and we will come up with designs to suit you.

Furniture and Accessories

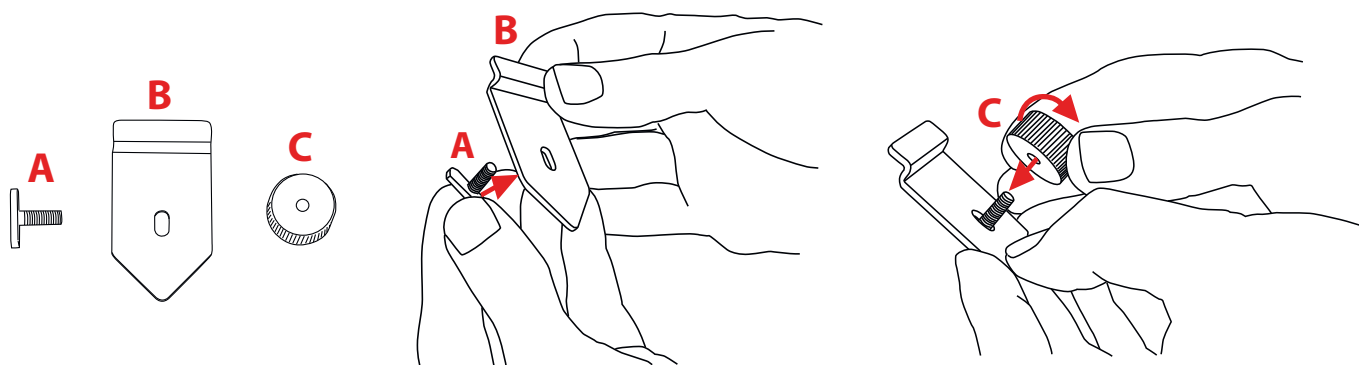
Adding accessories to your display makes the most of your environment and will attract more attention... We have a wide range of display furniture and accessories to suit your needs.

Assembly Instructions

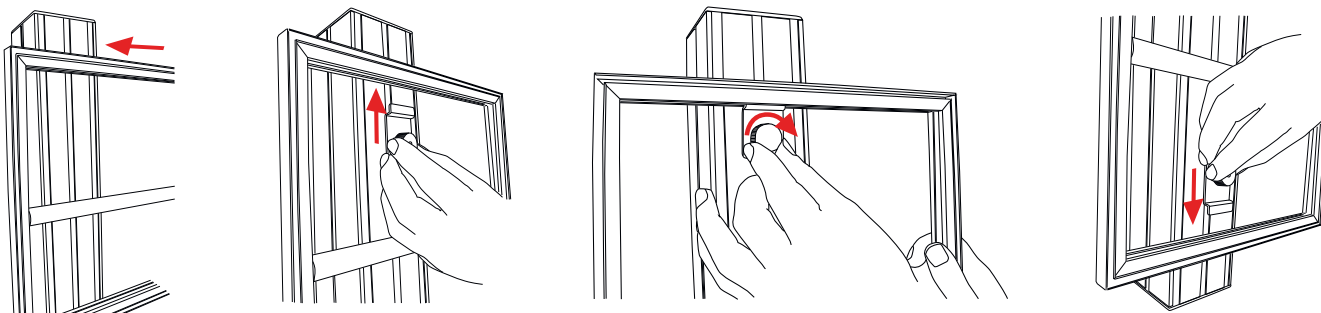
1 Assemble ShellFix frame as shown



2 Assemble ShellFix brackets



3 Position ShellFix frame onto the shell scheme posts then slide in brackets and twist to secure



4 Affix graphics, see steps 4 to 6 over for details

