

...ultimate linking backdrop system you can flex to suit any venue.

## Why choose between traditional banner stands and a pop-up display when the FlexiLight gives you the best of both?

Use the FlexiLight panels as individual banner stands or add panels to change the display width. If simplicity, speed of assembly and portability are what you need, then the FlexiLight ticks all the boxes.

## Benefits

- ✓ *Flex the display to almost any shape*
- ✓ *All graphic panels are the same size and can be frame mounted or used as a flexi-link*
- ✓ *Ultra lightweight, compact and portable*
- ✓ *Easy to assemble - tool free*
- ✓ *Add media screens and floodlights*



3x panels with counter  
(w) 2400mm



5x panels with counter  
(w) 4000mm



5x panels in shell scheme  
3m x 3m (2 walls)



11x panels in shell scheme  
4m x 3m (3 walls)



1x panel with counter  
(w) 800mm



# FlexiLight Assembly Instructions

## STAGE ONE (7 steps)



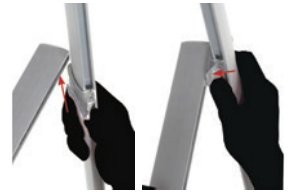
**1** Start by clicking the bottom beam into the foot ensuring the black stabilising feet face down.



**2** Mount the base post behind the beam, into the foot and lock it with the clamp.



**3** Slide the centre post onto the top of the base post.



**4** Apply the hook to the top beam and slide the beam into the bottom of the top post then push it down into the beam.



**5** Mount the top post with the attached top beam onto the top of the centre post.



**6** Mount the graphic panel starting at the **top left side** across to the right side. The graphics attach with magnetic tape assisted with clips in the top corners.



**7** Pull the bottom of the graphic down evenly and push into the bottom beam, **one side** at a time.



Build the other side of the stand follow the same points as before (Stage One, 1-7).

## STAGE TWO (4 steps)



**1** Now you have two completed panels the FlexiLink panel needs to be attached.



**2** Slide in the top and bottom graphic joint from side and mount the magnetic tape on the sides where you want to attach the FlexiLink graphic panel.



**3** Attach the flexi graphic panel between your two FlexiLight stands adding the centre magnetic to complete the link.



**4** Now you can add more stands and flexi panels and flex to the shape required.

## STAGE THREE (3 steps)

### The Counter

Convert your tube case into a neat, strong and easy-to-assemble counter with our case-to-counter upgrade.

It's as easy as 1,2,3!



1) Insert the tube into the base plate.



2) Pop on the top of the counter.



3) Wrap around the graphic and secure with velcro strips.

If your tube case is in a black sleeve, leave lid open when converting to a counter.



Call: 01767 603 930 | [www.parkesprintanddesign.com](http://www.parkesprintanddesign.com) | e: [sales@parkesprintgroup.com](mailto:sales@parkesprintgroup.com)

Parkes Display & Expo | 41 Hitchin Street | Biggleswade | Beds | SG18 8BE