



The Southern Cassowary is the perfect design to carry multiple graphics that can be switched in an instant.

It can be used in all sorts of situations, particularly those where your message might need to be changed regularly, such as a retail centre or an exhibition event.

### Features & Benefits

- ✓ In-out cartridge, simply swap cassettes to change your message
- ✓ Anti-slip feet and integral pole storage
- ✓ Twist & Lock adjustable pole and a ratchet to adjust the tension of the graphic to ensure it is always perfectly on display
- ✓ Hard wearing model
- ✓ Portable, lightweight & quick to assemble
- ✓ No tools required
- ✓ Sizes available: 2130 (h) x 800/1000mm (w)
- ✓ Packs into free carry bag for storage and transportation
- ✓ Special package discount for multiple quantities
- ✓ Full design and artwork enhancement service available

### Hardware Specifications

Hardware Dimensions (mm):

2210 (h) x 870 (w) x 220 (d) mm approx.

2210 (h) x 1070 (w) x 220 (d) mm approx.

Weight: 7.5kg

### Graphic Specifications

Total Visual Graphic Area: 800x2130mm

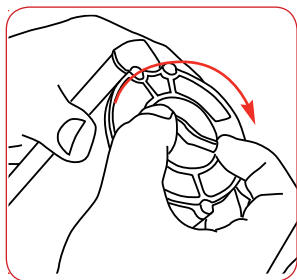
Total Visual Graphic Area: 1000x2130mm



Ask us for your copy of The Display Book, Promotional Gifts Catalogue, Exhibition Tips and Print Brochure, all packed with ideas to help you promote your company.

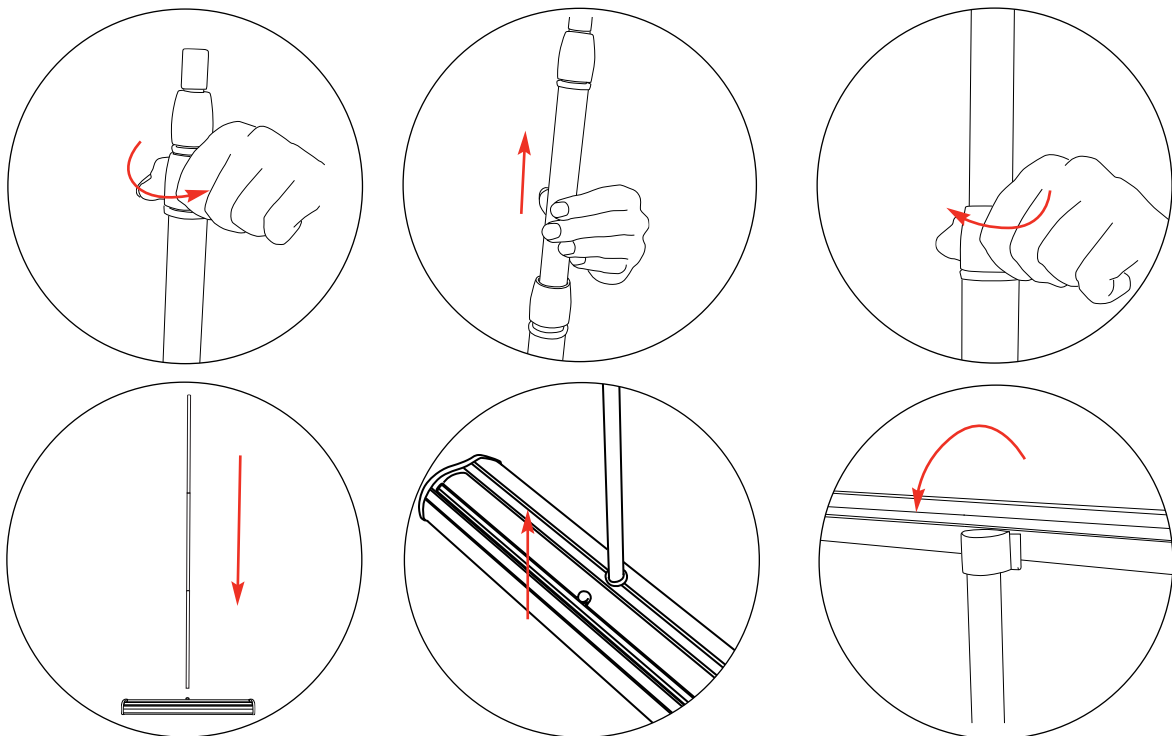
Call 01767 603930 or email sales@parkesprintgroup.com

We are continually improving and modifying our product range and reserve the right to vary the specifications without prior notice. All dimensions and weights quoted are approximate and we accept no responsibility for variance. E&OE.



To fully retraction banner turn the ratchet 32 full revolutions

**Assembly**



Other customers have bought these products to communicate their sales message



Design & Print | Exhibition & Display POS | Brochures | Mailers | Catalogues | Posters | Folders | Corporate Stationery | Labels | Inserts | Promotional Gifts

Let your marketing print & display take flight



Parkes Print & Design | 41 Hitchin Street | Biggleswade | Beds | SG18 8BE  
 T: 01767 603930 | E: sales@parkesprintgroup.com | W: www.parkesprintanddesign.com

